

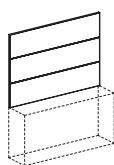
## Boiserie

L 180 P 1,8 × H 207,5



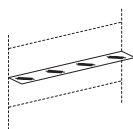
530.CB.TR.18\_

L 180 P 1,8 × H 123



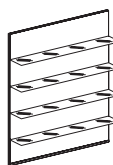
530.CB.SP.18\_

L 179 P 24 × H 0,8



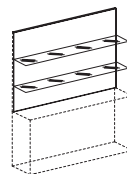
530.CB.RV.18\_

L 180 P 24,5 × H 207,5



530.CB.T1.18\_

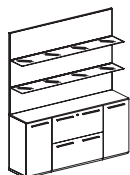
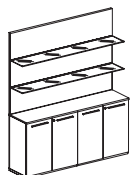
L 180 P 24,5 × H 123



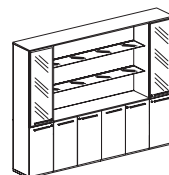
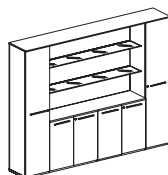
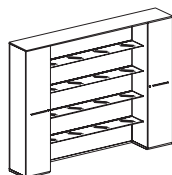
530.CB.S1.18\_

## Esempi di composizione/Examples of composition

L 180 P 45 × H 207,5



L 270 P 45 × H 209,3



### Note:

1 Le dimensioni sono espresse in cm – consultare il listino prezzi per le caratteristiche tecniche, i codici degli articoli e delle finiture/Dimensions are stated in cm – for technical characteristics, article code numbers and finishing see price list;